



# OBERDORFER®

An Ingersoll Rand Business

## Model 75PB Bronze Base Mounted Self-Priming Centrifugal Pump



### Features

- Pipe Size: 1 1/2"
- Self Priming to 20 Ft. Suction Lift
- Heavy Duty Ball Bearings
- Designed for Pulley Drive Applications
- Stainless Steel or Monel Shaft (OB75PB-01)
- Teflon(R)\* Barrier Lip Seal to Protect Motor Bearings
- Carbon Face Mechanical Pump Seals
- Viton(R)\* (S10) or Teflon(R)\* (S11) Pump Seals Available for Solvent Transfer
- Bronze Models with Monel Shaft Ideal for Marine Service (including air conditioning, bilge, and sea water recirculating)
- Will Handle Contaminated Liquids

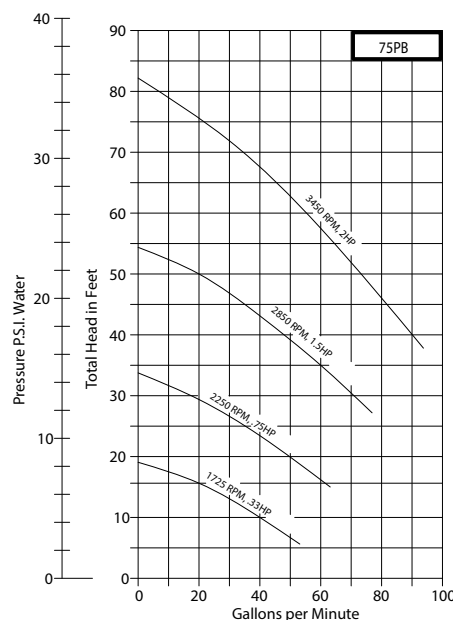
### Characteristics

The pump uses a mechanical type shaft seal with a Buna rubber element. It is suitable for water, oils, and some mild solvents and it is limited to 212°F. Viton(R)\* seals and Teflon(R)\* seals are available for severe solvents, difficult chemicals, and elevated temperatures.

The flow of a centrifugal pump can be conveniently controlled by a throttling valve in the discharge line without the need for a relief valve. In centrifugal pumps, the horsepower demand will decrease as the pressure increases. Maximum horsepower occurs with a wide open discharge.

### Performance

Capacity Water at 60°F



### Liquids

The special pump alloys used provide corrosion resistance to many liquids including water, water solutions, and a wide range of commercial chemicals. Questions as to the chemical compatibility of special liquids should be referred to the factory.

Viscous liquids with a maximum viscosity of 2000 Saybolt Seconds Universal can be pumped. However, when pumping viscous liquids as compared with water, a reduction in flow and pressure occurs and the required horsepower rate increases.

Liquids heavier than water require additional horsepower in direct proportion to the increase in specific gravity. Liquids contaminated with small solids or abrasives can be handled, but a reduction in mechanical seal life must be expected.

### Suction Lift

Self-priming centrifugal pumps must be primed once at the initial start-up thru the priming plug opening at the top of the pump body. On subsequent starts the pump will automatically prime itself and develop a lifting capability of 15 feet or more.

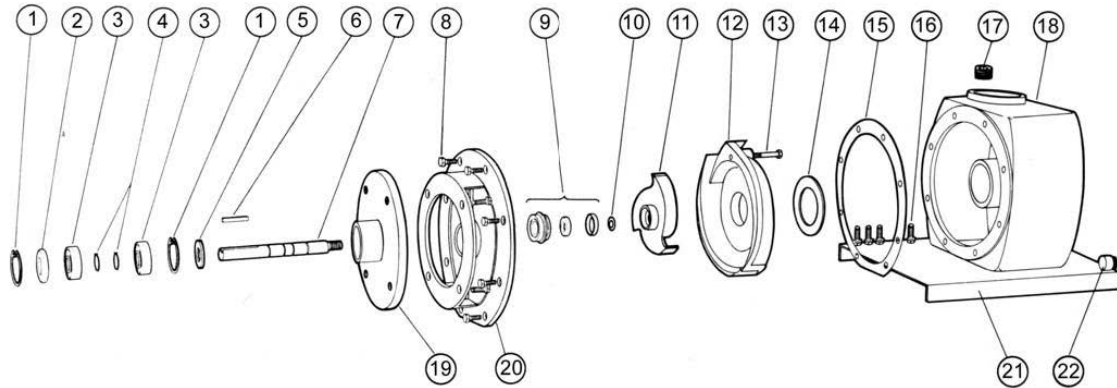
The height of the suction lift should be kept to an absolute minimum and the size of the suction pipe should be equal or larger than the pump inlet port. A foot valve with strainer is recommended at the beginning of the suction line. Rotation is clockwise looking from the shaft end. Self-priming centrifugal must be operated with the shaft in the horizontal position. See chart.



# OBERDORFER®

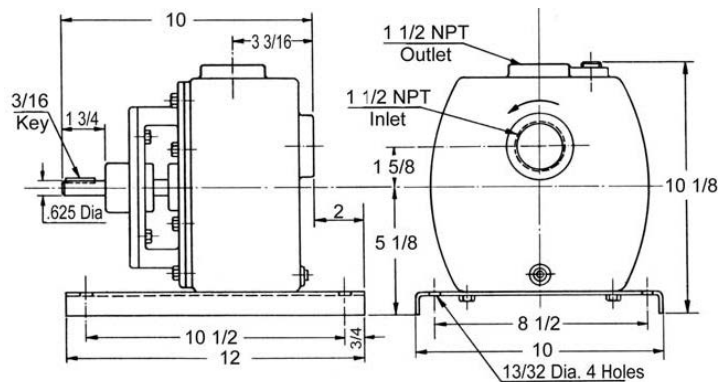
An Ingersoll Rand Business

## Exploded View and Parts List



	1	2	3	4	5	6	7	8	9	10	11	12	13	14	15	16	17
	Ret. Ring	Lip Seal	Ball Bearing	Ret. Ring	Slinger	Key	Shaft	Screw	Seal Assy.	Shim	Impeller	Diffuser	Screw	Gasket Diffuser	O-Ring	Screw	Plug
Pump No.	2 Req'd	1 Req'd	2 Req'd	2 Req'd	1 Req'd	1 Req'd	1 Req'd	12 Req'd	1 Req'd	1 Req'd	1 Req'd	1 Req'd	2 Req'd	1 Req'd	1 Req'd	4 Req'd	1 Req'd
OB75PB	OB5925	OB6609	OB5928	OB5926	OB7447	OB6567	OB7037	OB5411	OB32155	OB602502	OB7927	OB7928	OB7796	OB7798	OB2390-167	OB7637	OB7934
OB75PB-01	OB5925	OB6609	OB5928	OB5926	OB7447	OB6567	OB6890	OB5411	OB32155	OB602502	OB7927	OB7928	OB7796	OB7798	OB2390-167	OB7637	OB7934

## Dimensions



	18	19	20	21	22	
	Body	Bearing Plate	Adapter	Base	Plug	Repair Kit
Pump No.	1 Req'd	1 Req'd	1 Req'd	1 Req'd	1 Req'd	
OB75PB	OB7929	OB7933	OB7926	OB6742	OB7321	OB11145
OB75PB-01	OB7929	OB7933	OB7926	OB6742	OB7321	OB11145

Repair Kit contains items 9, 11, 14 & 15.

## Capacity GPM (Water) at Various Suction Lifts

Discharge Pressure	3450 RPM Suction Lift						2850 RPM Suction Lift					
	Feet	PSI	0 ft.	5 ft.	10 ft.	15 ft.	20 ft.	0 ft.	5 ft.	10 ft.	15 ft.	20 ft.
20	8.7	94	93	92	91	87	87	79	72	64	54	
30	13.0	93	92	91	87	80	71	62	52	38	21	
40	17.3	91	86	81	71	60	54	38	20	--	--	
50	21.7	76	69	60	49	35	22	--	--	--	--	
60	26.0	59	49	37	23	5	--	--	--	--	--	
70	30.5	38	24	8	--	--	--	--	--	--	--	
80	34.6	13	--	--	--	--	--	--	--	--	--	

Discharge Pressure	2250 RPM Suction Lift						1725 RPM Suction Lift					
	Feet	PSI	0 ft.	5 ft.	10 ft.	15 ft.	20 ft.	0 ft.	5 ft.	10 ft.	15 ft.	20 ft.
5	2.2	64	63	62	53	40	50	43	25	7	--	--
10	4.3	64	62	53	40	20	41	25	--	--	--	--
15	6.5	61	53	40	20	--	23	--	--	--	--	--
20	8.7	50	37	19	--	--	--	--	--	--	--	--
25	10.8	38	20	--	--	--	--	--	--	--	--	--
30	13.0	20	--	--	--	--	--	--	--	--	--	--



12500 South Pulaski Road  
Alsip, IL 60803, USA  
Phone (800) 448.1668